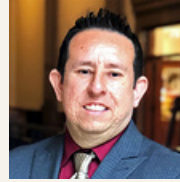




**MARISA BONO** *(she/her/ella)*  
**CHIEF EXECUTIVE OFFICER**  
 ☎ 210-710-5905  
 ✉ bono@everytexan.org  
 🐦 @MarisaBono



**LOLA VINSON** *(she/her)*  
**CHIEF OF STRATEGY**  
 ☎ 310-339-5629  
 ✉ vinson@everytexan.org  
 🐦 @iam\_lolaestelle



**LUIS FIGUEROA**  
**CHIEF OF LEGISLATIVE AFFAIRS**  
 ☎ 210-422-0965  
 ✉ figueroa@everytexan.org  
 🐦 @LFiggy78

## POLICY & ADVOCACY



**CHANDRA KRING VILLANUEVA** *(she/her)*  
**DIRECTOR OF POLICY & ADVOCACY**  
 ☎ 512-823-2862 ☎ 360-402-5741  
 ✉ villanueva@everytexan.org 🐦 @ChandraKus  
*School Finance, Pre-K, Bilingual Education*



**JAIME PUENTE**  
**DIRECTOR OF ECONOMIC OPPORTUNITY**  
 ☎ 832-475-1522  
 ✉ puente@everytexan.org 🐦 @jrphtx  
*K-12 Education, Immigration*

ECONOMIC OPPORTUNITY



**AMANDA POSSON** *(she/her)*  
**SENIOR POLICY ANALYST**  
 ☎ 512-527-4562  
 ✉ posson@everytexan.org  
*Paid Leave, Minimum Wage, Local Democracy, Labor, Worker Power*



**KIMBERLY CLARIDA** *(she/her)*  
**HIGHER EDUCATION POLICY ANALYST**  
 ☎ 910-840-4398  
 ✉ clarida@everytexan.org



**RACHEL COOPER** *(she/her)*  
**DIRECTOR OF HEALTH & FOOD JUSTICE**  
 ☎ 512-823-2874 ☎ 646-342-5491  
 ✉ cooper@everytexan.org  
*Nutrition & Benefit Access, SNAP, TANF, Kinship, School Meals*



**SHANNON HALBROOK**  
**DIRECTOR OF INVEST IN TEXAS**  
 ☎ 512-808-8907  
 ✉ halbrook@everytexan.org  
*State Budget, Workforce Development*



**DICK LAVINE**  
**SENIOR FISCAL ANALYST**  
 ☎ 512-636-8814  
 ✉ lavine@everytexan.org 🐦 @DLavine  
*State & Local Revenue, Economic Incentives*



**SAMMY CERVANTES**  
**INVEST IN TEXAS ANALYST**  
 ☎ 832-362-5220  
 ✉ cervantes@everytexan.org

INVEST IN TEXAS



**KATIE MARTIN LIGHTFOOT** *(she/her)*  
**DIRECTOR OF COMMUNITY ENGAGEMENT & ADVOCACY**  
 ☎ 469-835-2860  
 ✉ martin@everytexan.org 🐦 @KatieMartfoot



**SIMONA GABRIELA HARRY**  
**COMMUNITY ENGAGEMENT COORDINATOR**  
 ☎ 956-371-8882  
 ✉ harry@everytexan.org 🐦 @SimonaGabrielaH



**BREANNA BOYD** *(she/her)*  
**HEALTH & FOOD JUSTICE ORGANIZER**  
 ☎ 713-906-2788  
 ✉ boyd@everytexan.org

## COMMUNITY ENGAGEMENT & ADVOCACY



### RESEARCH & DATA



**CODA RAYO-GARZA** (she/her/ella)

RESEARCH & DATA DIRECTOR

☎ 210-535-0953

✉ rayo-garza@everytexan.org

Data Analysis, Research, Mapping



**SARAH SERPAS** (she/her)

SENIOR RESEARCH & DATA ANALYST

☎ 432-559-5287

✉ serpas@everytexan.org

Data Analysis, Research, Mapping



**KAITLAN WONG** (she/her)

RESEARCH ANALYST

☎ 402-650-8588

✉ wong@everytexan.org @KaitlanWong

Data Analysis

### EQUITY & LEARNING



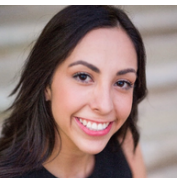
**JONATHAN MALAGON** (he/him)

DIRECTOR OF EQUITY & LEARNING

☎ 310-486-7934

✉ malagon@everytexan.org

### COMMUNICATIONS



**DANY GUERRERO**

INTERIM COMMUNICATIONS DIRECTOR

☎ 336-671-9377

✉ guerrero@everytexan.org



## EVERY TEXAN

Since its founding in 1985, Every Texan (formerly the Center for Public Policy Priorities) has leveraged public policy to expand opportunity and equity for Texans of all backgrounds. Every Texan is an independent policy research and advocacy organization, with a focus on improving equitable access to health care, food security, education, financial security, and voting rights. We apply a racial equity and socioeconomic lens to our research and data to humanize our analysis and shape effective, people-centered policy solutions. We work with our partners to help the public and policymakers make choices that benefit all Texans, regardless of their race, class, gender, zip code, or any other factor.

**Please direct questions to:**

[policy@everytexan.org](mailto:policy@everytexan.org)

**Please direct media inquiries to:**

[media@everytexan.org](mailto:media@everytexan.org)

## *Social justice requires public policy.*

Stay informed on the latest legislative updates: [everytexan.org/point-of-order/](https://everytexan.org/point-of-order/)

Read our latest policy analysis, research, and commentary: [everytexan.org/our-blog](https://everytexan.org/our-blog)

EveryTexan.org @Every\_Txn EveryTexan Every\_Texan