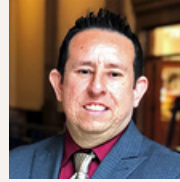




MARISA BONO (she/her/ella)
CHIEF EXECUTIVE OFFICER
☎ 210-710-5905
✉ bono@everytexan.org
🐦 @MarisaBono



LUIS FIGUEROA
CHIEF OF LEGISLATIVE AFFAIRS
☎ 210-422-0965
✉ figueroa@everytexan.org
🐦 @LFiggy78

POLICY & ADVOCACY



CHANDRA KRING VILLANUEVA (she/her)
DIRECTOR OF POLICY & ADVOCACY
☎ 512-823-2862 ☎ 360-402-5741
✉ villanueva@everytexan.org 🐦 @ChandraKus
School Finance, Pre-K, Bilingual Education



RACHEL COOPER (she/her)
DIRECTOR OF HEALTH & FOOD JUSTICE
☎ 512-823-2874 ☎ 646-342-5491
✉ cooper@everytexan.org
Nutrition & Benefit Access, SNAP, TANF, Kinship, School Meals



ANNE DUNKELBERG
SENIOR FELLOW
☎ 512-823-2864 ☎ 512-627-5528
✉ dunkelberg@everytexan.org 🐦 @adunkEveryTexan
Medicaid & CHIP, Health Care Access & Affordability, Immigrant Health Care Access



CURTIS HILLS
FOOD POLICY ANALYST
☎ 601-317-6726
✉ hills@everytexan.org
SNAP, TANF, School Meals



KARLA MARTINEZ (she/her/ella)
POLICY ANALYST
☎ 361-676-0650
✉ kmartinez@everytexan.org 🐦 @karlamartineztx
Eligibility/Enrollment, Medicaid, CHIP, ACA



STACEY POGUE (she/her)
SENIOR POLICY ANALYST
☎ 512-823-2863 ☎ 512-663-7173
✉ pogue@everytexan.org 🐦 @StaceyPogue
Private Health Insurance, Health Insurance Marketplace, Women's Health



JAIME PUENTE
DIRECTOR OF ECONOMIC OPPORTUNITY
☎ 832-475-1522
✉ puente@everytexan.org 🐦 @jrphx
K-12 Education, Immigration

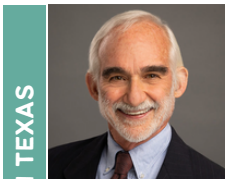
HEALTH & FOOD JUSTICE



SIMONA GABRIELA HARRY (she/her/ella)
COORDINATOR, POLICY LEADERS OF TEXAS
☎ 956-371-8882
✉ harry@everytexan.org 🐦 @SimonaGabrielaH
Postsecondary Education



AMANDA POSSON (she/her)
SENIOR POLICY ANALYST
☎ 512-527-4562
✉ posson@everytexan.org
Paid Leave, Minimum Wage, Local Democracy, Labor, Worker Power

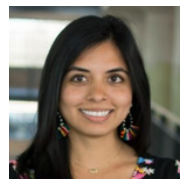


DICK LAVINE
SENIOR FISCAL ANALYST
☎ 512-636-8814
✉ lavine@everytexan.org 🐦 @DLavine
State & Local Revenue, Economic Incentives



SHANNON HALBROOK
SENIOR FISCAL ANALYST
☎ 512-808-8907
✉ halbrook@everytexan.org
State Budget, Workforce Development

COMMUNITY ENGAGEMENT & ADVOCACY



KATIE MARTIN LIGHTFOOT (she/her)
DIRECTOR OF COMMUNITY ENGAGEMENT & ADVOCACY
☎ 469-835-2860
✉ martin@everytexan.org 🐦 @KatieMartfoot

RESEARCH & DATA



CODA RAYO-GARZA (she/her/ella)
RESEARCH & DATA DIRECTOR
☎ 210-535-0953
✉ rayo-garza@everytexan.org
Data Analysis, Research, Mapping



KAITLAN WONG (she/her)
RESEARCH ANALYST
☎ 402-650-8588
✉ wong@everytexan.org 🐦 @KaitlanWong
Data Analysis



EQUITY & LEARNING



JONATHAN MALAGON (he/him)

DIRECTOR OF EQUITY & LEARNING

☎ 310-486-7934

✉ malagon@everytexan.org

COMMUNICATIONS

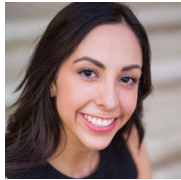


LOLA E. VINSON (she/her)

COMMUNICATIONS DIRECTOR

☎ 310-339-5629

✉ vinson@everytexan.org 🐦 @legacylola



DANY GUERRERO

DEPUTY COMMUNICATIONS DIRECTOR

☎ 336-671-9377

✉ guerrero@everytexan.org



EVERY TEXAN

Since its founding in 1985, Every Texan (formerly the Center for Public Policy Priorities) has leveraged public policy to expand opportunity and equity for Texans of all backgrounds. Every Texan is an independent policy research and advocacy organization, with a focus on improving equitable access to health care, food security, education, financial security, and voting rights. We apply a racial equity and socioeconomic lens to our research and data to humanize our analysis and shape effective, people-centered policy solutions. We work with our partners to help the public and policymakers make choices that benefit all Texans, regardless of their race, class, gender, zip code, or any other factor.

Please direct questions to:
policy@everytexan.org

Please direct media inquiries to:
media@everytexan.org

Social justice requires public policy.

Stay informed on the latest legislative updates: everytexan.org/point-of-order/

Read our latest policy analysis, research, and commentary: everytexan.org/our-blog

EveryTexan.org 🐦 @Every_Txn 📘 EveryTexan 📷 Every_Texan