



EVERY TEXAN

Formerly Center for Public Policy Priorities

Legislative Session Staff

LEGISLATIVE & POLICY



Marisa Bono *(she/her/ella)*
CHIEF EXECUTIVE OFFICER
C 210-710-5905
bono@everytexan.org
@MarisaBono

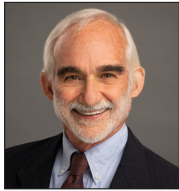


Luis Figueroa
LEGISLATIVE & POLICY DIRECTOR
C 210-422-0965
figueroa@everytexan.org
@LFiggy78

INVEST IN TEXAS



Eva DeLuna Castro
PROGRAM DIRECTOR, BUDGET ANALYST
T 512-823-2861, C 512-402-2720
deluna.castro@everytexan.org, @DeLunaEva
State Budget, Federal & Local Govt. Spending



Dick Lavine
SENIOR FISCAL ANALYST
T 512-823-2860, C 512-636-8814
lavine@everytexan.org, @DLavine
State & Local Revenue, Economic Incentives

RESEARCH & DATA



Eva DeLuna Castro
INTERIM PROGRAM DIRECTOR
T 512-823-2861, C 512-402-2720
deluna.castro@everytexan.org, @DeLunaEva



Kaitlan Wong *(she/her)*
RESEARCH ANALYST
C 402-650-8588
wong@everytexan.org, @KaitlanWong
Data Analysis

COMMUNITY ADVOCACY



Katie Martin Lightfoot *(she/her)*
SENIOR MANAGER OF ENGAGEMENT & ADVOCACY
C 469-835-2860
martin@everytexan.org, @KatieMartfoot
Community Engagement

HEALTH & WELLNESS



Anne Dunkelberg
PROGRAM DIRECTOR & ASSOC. DIRECTOR
T 512-823-2864, C 512-627-5528
dunkelberg@everytexan.org, @ADunkEveryTexan
Medicaid & CHIP, Health Care Access & Affordability, Immigrant Health Care Access



Rachel Cooper
SENIOR POLICY ANALYST
T 512-823-2874, C 646-342-5491
cooper@everytexan.org
Nutrition & Benefit Access, SNAP, TANF, Kinship, School Meals



Stacey Pogue *(she/her)*
SENIOR POLICY ANALYST
T 512-823-2863, C 512-663-7173
pogue@everytexan.org, @StaceyPogue
Private Health Insurance, Health Insurance Marketplace, Women's Health



Karla Martinez *(she/her)*
POLICY ANALYST
C 361-676-0650, @KarlaMartinezTX
kmartinez@everytexan.org
Eligibility/Enrollment, Medicaid, CHIP, ACA

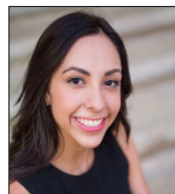


Curtis Hills
FOOD POLICY ANALYST
C 601-317-6726
hills@everytexan.org
SNAP, TANF, School Meals

COMMUNICATIONS



Lola E. Vinson *(she/her)*
COMMUNICATIONS DIRECTOR
C 469-559-2086
vinson@everytexan.org
@LegacyLola



Daniela Guerrero *(she/her)*
EXTERNAL RELATIONS ASSOCIATE
C 336-671-9377
guerrero@everytexan.org

Social justice requires public policy.

Stay updated on the latest legislative updates: [EveryTexan.org/our-blog](https://www.everytexan.org/our-blog)
EveryTexan.org @Every_Txn f EveryTexan Instagram Every_Texan



EVERY TEXAN

Formerly Center for Public Policy Priorities

ECONOMIC OPPORTUNITY



Chandra Kring Villanueva *(she/her)*

PROGRAM DIRECTOR

T 512-823-2862, C 360-402-5741

villanueva@everytexan.org, @ChandraKus
School Finance, Pre-K, Bilingual Education



Jonathan Lewis *(he/him)*

SENIOR POLICY ANALYST

T 512-823-2879

lewis@everytexan.org, @JLewis_TX
*Unemployment Insurance, Medical Debt,
Financial Security, Min. Wage, Local Control*



Simona Gabriela Harry *(she/her/ella)*

COORDINATOR, POLICY LEADERS OF TX

C 956-371-8882

harry@everytexan.org, @SimonaGabrielaH
Postsecondary Education



Skyler Korgel

POLICY ANALYST

C 817-899-0666, @SkylerBrandina

korgel@everytexan.org
Higher Education



Jaime Puente

POLICY ANALYST

C 832-475-1522

puente@everytexan.org
K-12 Education, Immigration



EVERY TEXAN

We envision a Texas where people of all backgrounds can contribute to and share in the prosperity of our state. We advance social justice through public policy because it is one of the most effective ways to deliver strategic and systemic change. We are proven experts in strengthening public policy to expand opportunity and equity for every Texan.

Please direct media inquiries to:

media@everytexan.org

EveryTexan.org @Every_Txn EveryTexan Every_Texan